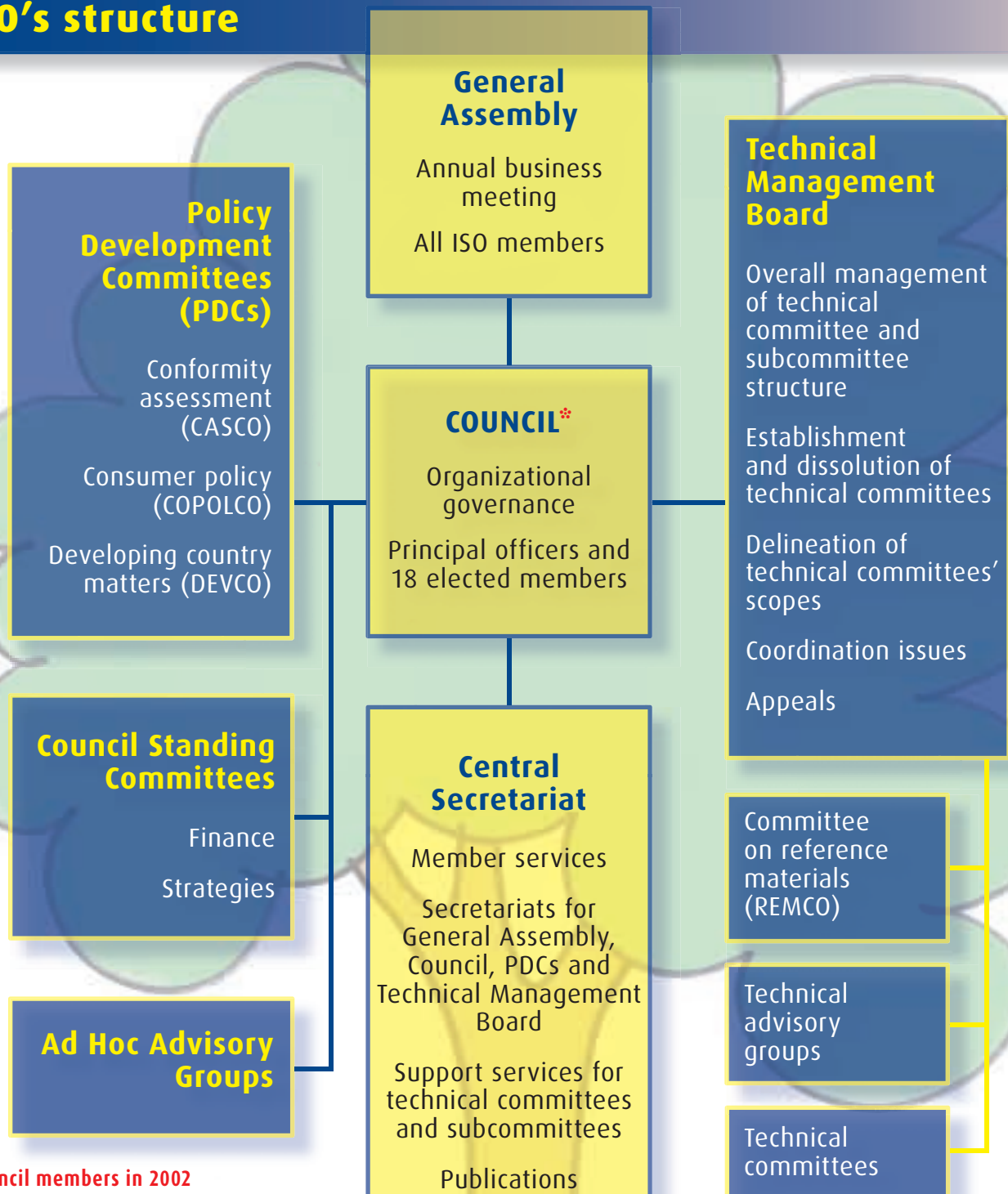


ISO's structure



* Council members in 2002

- AENOR (Spain)
- AFNOR (France)
- ANSI (USA)
- BIS (India)
- BSI (United Kingdom)
- DIN (Germany)
- DS (Denmark)
- DSM (Malaysia)
- JBS (Jamaica)
- JISC (Japan)
- KATS (Korea, Rep. of)
- KEBS (Kenya)
- SASO (Saudi Arabia)
- SCC (Canada)
- SII (Israel)
- SIS (Sweden)
- SNZ (New Zealand)
- TCVN (Viet Nam)

